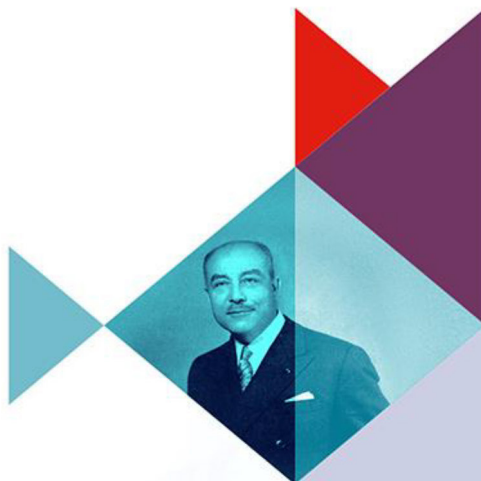


INSTITUT  
**GASTON BERGER**



**Tracking of applications and entries, with  
regard to gender – 2009-2022**

Arnaud Trollé – Monitoring Unit, Institut Gaston Berger – INSA Lyon

*November 2023*



## Table of Contents

<b>1</b>	<b>INSA Group applicants .....</b>	<b>1</b>
1.1	Application rate among Bac S/Gen students.....	1
1.2	Rate of women among applicants to the INSA Group.....	2
<b>2</b>	<b>INSA Group entrants .....</b>	<b>3</b>
2.1	Entry rate of applicants .....	3
2.2	Rate of women among first-year entrants .....	4

This summary sheet, produced by the Monitoring Unit of the Institut Gaston Berger<sup>1</sup>, shows the tracking of applicants and entrants into the INSA Group, with regard to gender and over the period 2009-2022.

The statistics presented in this document only cover students holding a French general science baccalaureate (Bac S) or a new French general baccalaureate (Bac Gen, from 2021) who applied to the INSA Group in the first year, as these students form the Group's main recruitment pool.

## 1 INSA Group applicants

### 1.1 Application rate among Bac S/Gen students

Figure 1 shows the change in the application rate for women and men, defined as the ratio of the number of applications to the INSA Group to the number of final-year Bac S/Gen<sup>2</sup> students.

Concerning final-year Bac Gen students, this application rate was computed by considering only the students with the doublets that include mathematics and another scientific special topic<sup>3</sup>.

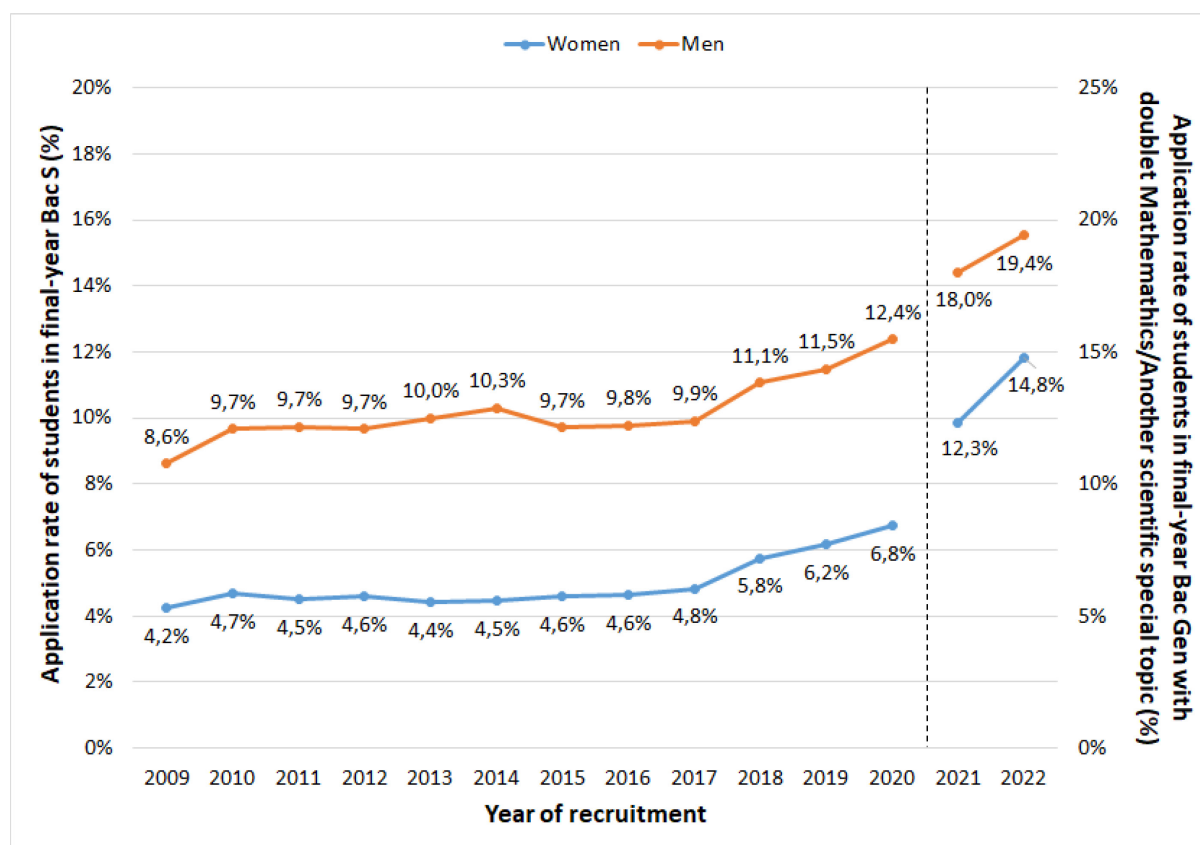


Figure 1: Change in the application rate for men and women, between 2009 and 2022 (at the beginning of academic year 2021/2022, final-year Bac Gen with doublets Mathematics / Another scientific special topic: 36,407 women, or 35.7%; 65,454 men, or 64.3%).

<sup>1</sup> <https://institut-gaston-berger.insa-lyon.fr/content/observatoire-de-linstitut-gaston-berger-0>.

<sup>2</sup> The numbers of final-year Bac Gen students (at the beginning of the academic years 2020/2021 and 2021/2022) are available from: <https://data.education.gouv.fr/explore/dataset/fr-en-effectifs-specialites-doublettes-terminale-generale/table/> (accessed 06/11/2023).

<sup>3</sup> In the open dataset, the numbers of students are not available for several other doublets present among the applicants to the INSA Group. The students with the doublets that include mathematics and another scientific special topic represented 85% and 90% of the applicants in 2021 and in 2022, respectively.

After stagnating over the period 2010-2017 for both women and men, the application rate for final-year Bac S students (Y-axis on the left side of figure 1) increased from 2018 onwards (between 2017 and 2020: +2 points for women and +2.5 points for men). This increase came in the year in which the Parcoursup platform was set up to replace APB, which seems to have improved the visibility and attractiveness of the INSA Group. In all years (2009-2020), the application rate for final-year Bac S students is almost half as high among women as among men. Although the attractiveness of the INSA Group has increased sharply over the last two years, it still remains lower for women (-5.6 points). **In 2020, 12.4% of male final-year Bac S students and 6.8% of female final-year Bac S students applied to the INSA Group.**

The application rate for final-year Bac Gen students with the doublets Mathematics / Another scientific special topic (Y-axis on the right side of figure 1) from 2021 is not directly comparable to that for final-year Bac S students in previous years. Between 2021 et 2022, the application rate for final-year Bac Gen students has increased for both women and men (+2.5 points for women and +1.4 point for men); the difference in application rate between male and female final-year Bac Gen students has decreased (+4.6 points in 2022, against +5.7 points in 2021). **In 2022, 19.4% of male final-year Bac Gen students and 14.8% of female final-year Bac Gen students applied to the INSA Group.**

## 1.2 Rate of women among applicants to the INSA Group

Despite a lower attractiveness for women, Figure 2 shows that between 2014 and 2020, the rate of women among applicants to the INSA Group increased by 6.2 points. From 2021 onwards, this rate decreased slightly. **In 2022, 31.6% of applicants to the INSA Group were women** (against 33.1% in 2020).

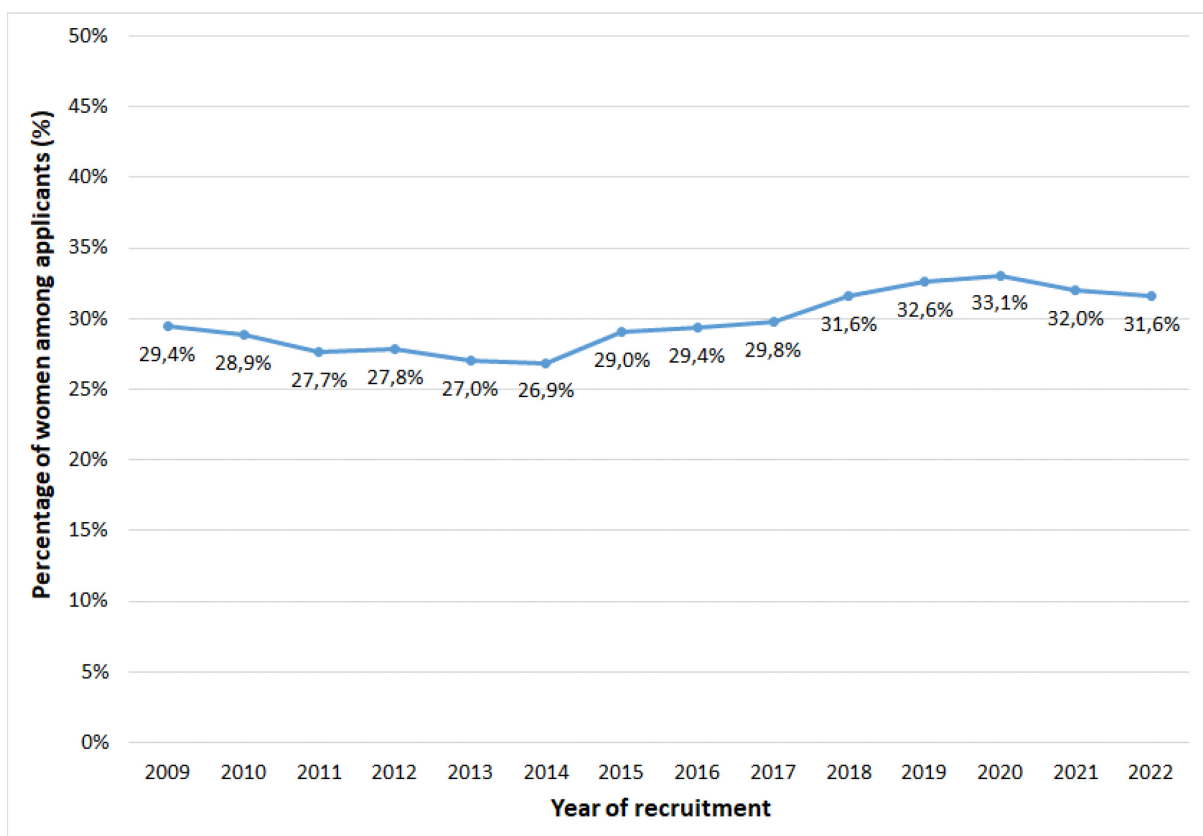


Figure 2: Change in the rate of women among applicants between 2009 and 2022.

## 2 INSA Group entrants

### 2.1 Entry rate of applicants

Figure 3 shows the change in the entry rate of applicants to the INSA Group, defined as the ratio of the number of entrants (i.e., admitted and present at the beginning of the academic year) to the number of applicants.

The entry rate for women is consistently higher than that of men, by 3 to 6 points since 2014, showing that the quality of women's applications is, on average, higher than that of men's applications.

While the change in the entry rate of women and men remained almost the same from 2009 to 2013, there was a sudden and strong increase in the entry rate of women in 2014 (+2.4 points) while that of men remained stable. The year 2014 coincided with a change in the INSA Group's recruitment procedure (abandonment of the B wave recruited on baccalaureate grades), which seems to have been favourable to women.

Then, starting in 2015, the entry rates for both women and men again began to follow the same trends, with a slow decline and then a more pronounced one in 2018. This decrease is due to an increasingly high level of selectivity due to the continuous increase in the attractiveness of the INSA Group, and therefore the increase in the number of applications, for an almost constant number of places offered at INSA schools. This increase was exacerbated in 2018 with the opening of Parcoursup. Between 2018 and 2021, the entry rate of women continued to decline; that of men remained stable between 2018 and 2020 and then decreased in 2021. Finally, the entry rates for both women and men rebounded in 2022.

**In 2022, the entry rate was 12.7% for women and 9.5% for men.**

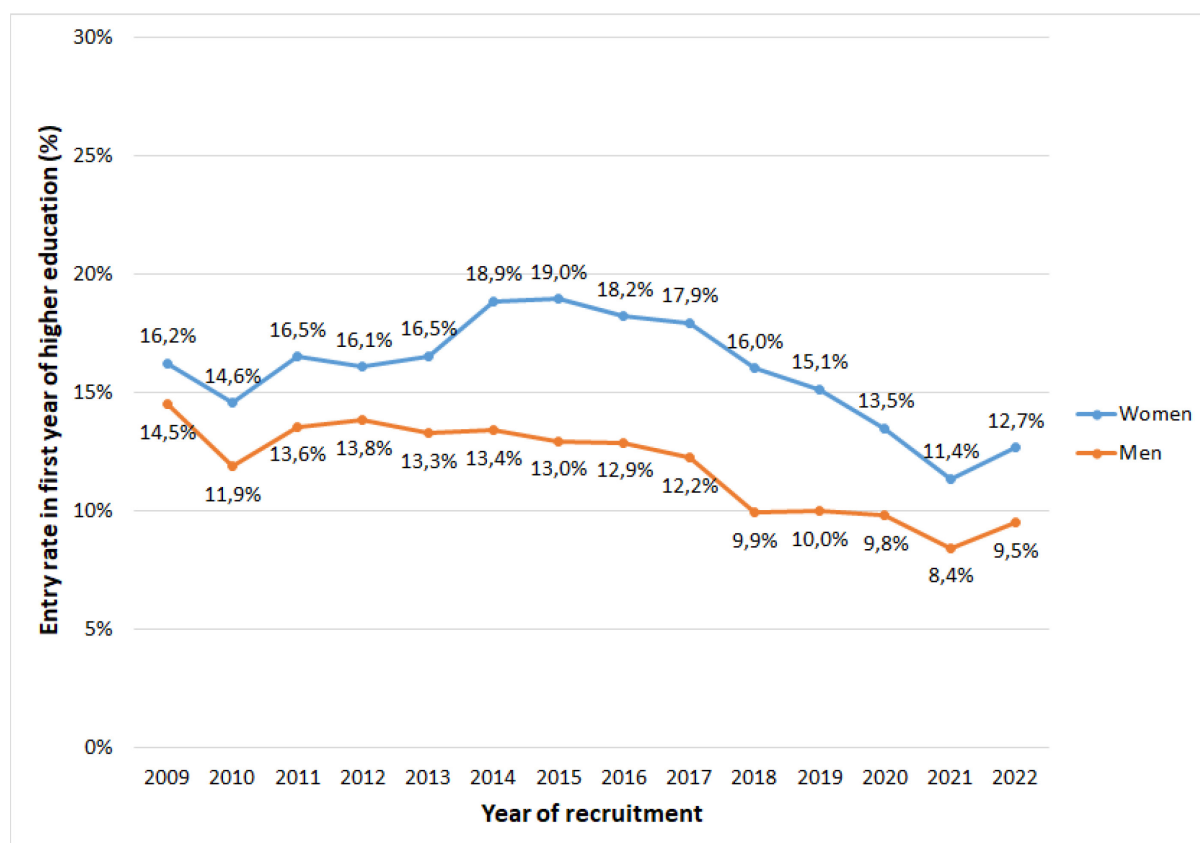


Figure 3: Change in the rate of entry into the INSA Group between 2009 and 2022.

## 2.2 Rate of women among first-year entrants

As shown in Figure 4, the rate of women among first-year entrants increased steadily between 2014 and 2018. In particular, there was an initial sharp increase in 2014, probably due to the widening gap in the entry rate in favour of women (see Figure 3) linked to the change in the recruitment procedure, then a second sharp increase in 2015, probably due to an increase in the number of applications from women (see Figure 2). A strong increase was again observed in 2018 with the appearance of Parcoursup. Finally, the rate of women among first-year entrants decreased slightly from 2018 onwards.

**In 2022, 38.0% of Bac S/Gen holders starting their first year in the INSA Group were women, a rate 7 points higher than that observed in 2012.**

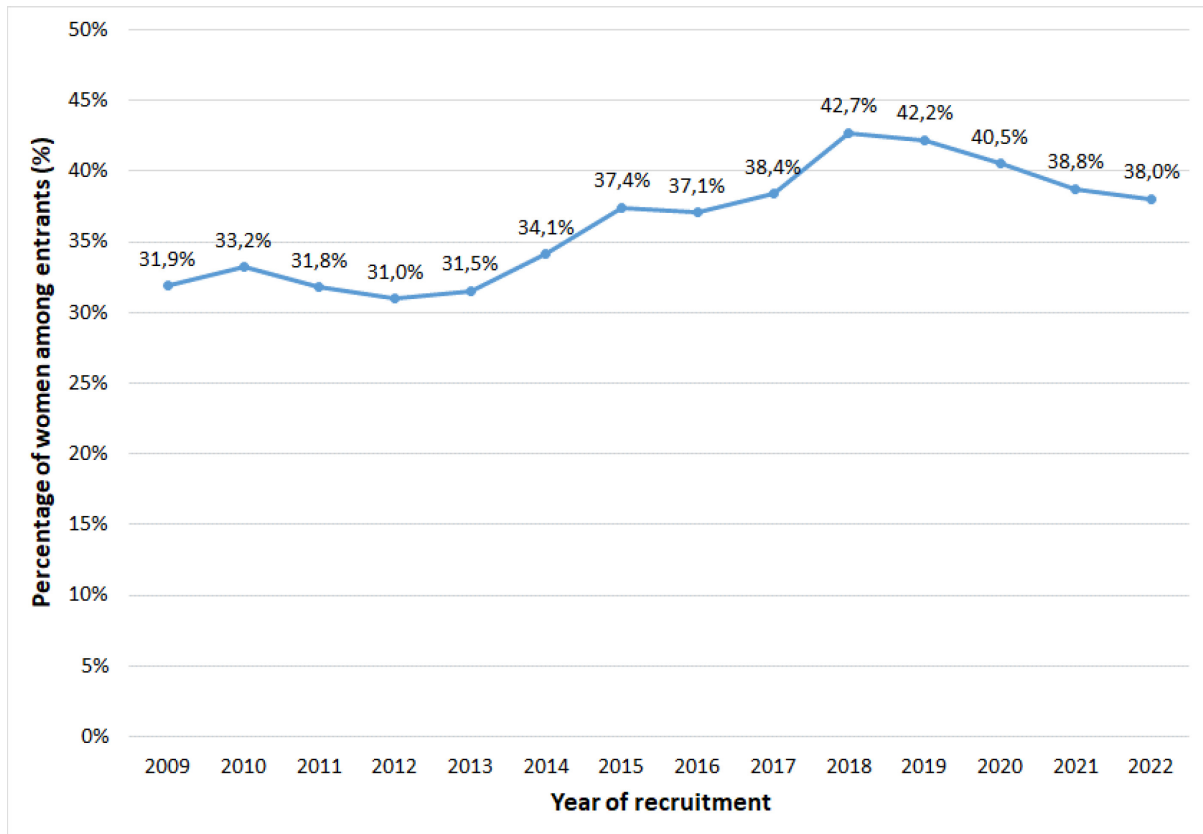


Figure 4: Change in the rate of women among entrants between 2009 and 2022.